

# Georgetown

ENGINEERED FOR THE ROAD



A Berkshire Hathaway company.

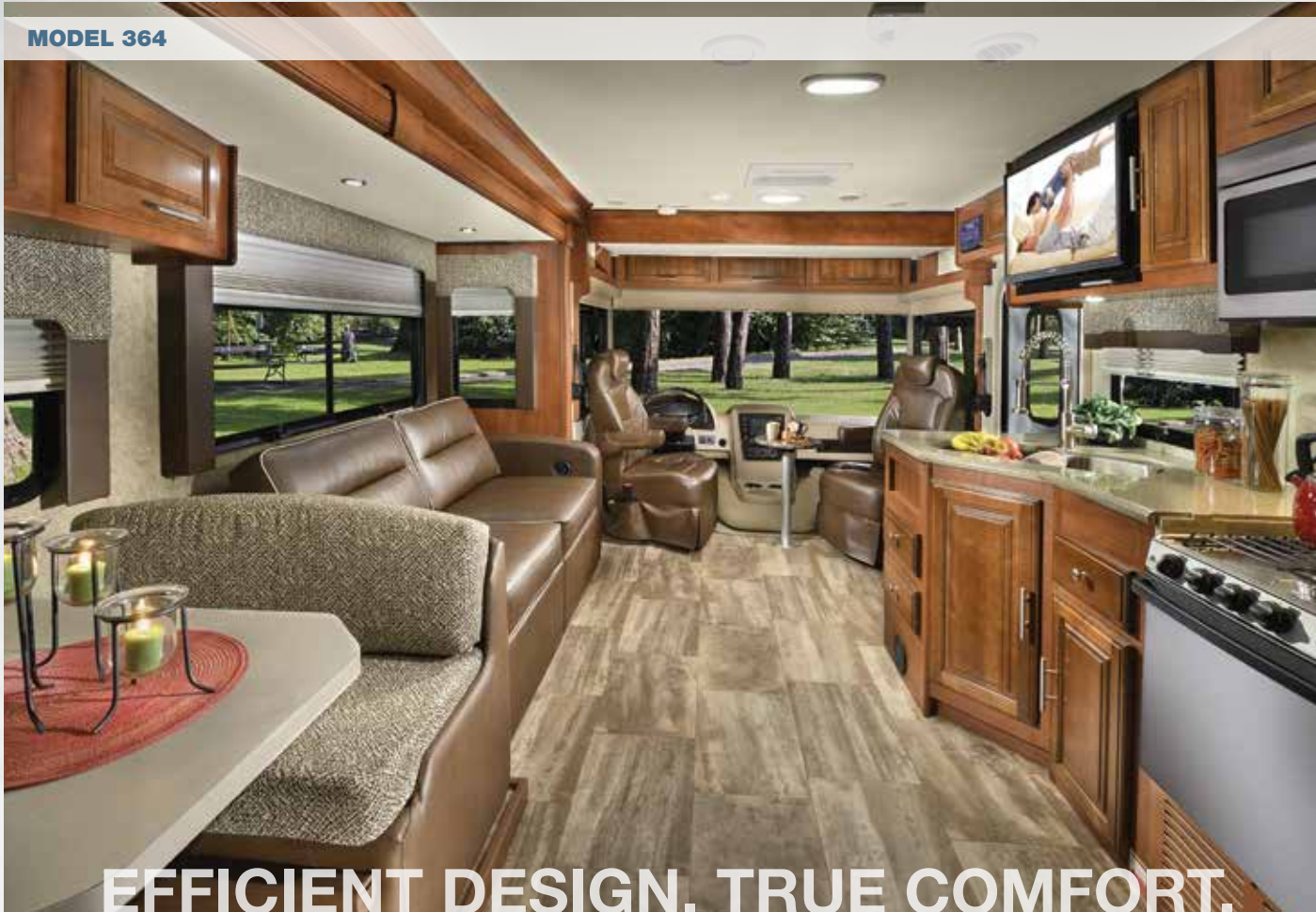
Georgetown



A Berkshire Hathaway company.



**MODEL 364**



**EFFICIENT DESIGN. TRUE COMFORT.**

The Georgetown series is a nice way to introduce yourself to the RVing lifestyle. Engineered for the road and designed for the driver, our models offer you plenty of storage and all of the amenities at a great price. With five great floorplans and three interiors to choose from, the choice is yours.

The model 364 floorplan is great for families or adults who love to entertain. It features a large galley and spacious dinette that seats friends and family in total comfort. Enjoy a private retreat in the master suite with a standard 32" LED TV, king bed and plenty of storage.

Visit your local dealer today and put yourself in a Georgetown, where efficient design and true comfort come together.

**ALL MODELS** FRONT BUNK OPTION



**MODEL 364** BUNK AREA



**MODEL 364** BEDROOM/REAR BATH





# STANDARDS & OPTIONS

## STANDARDS

- Fiberglass Roof
- Deluxe Solid Surface Kitchen Countertops
- Undermount Stainless Steel Kitchen Sink w/ Flush Solid Surface Covers
- High Rise Kitchen Faucet w/ Pull Out Sprayer
- Fog Lights
- Slam Latch Baggage Doors
- Slide Out Awnings
- Stainless Steel Bathroom Sink
- Dream Dinette
- Huge Rear Storage Compartment
- 30" Entrance Door (most models)
- Water Filtration System – Full Coach
- Outside Shower
- Flush Floor Construction Throughout
- Deluxe Dash w/ Cup Holder
- AM/FM/CD Player
- 3 Point Seat Belts
- Dash Fans
- Soft Touch Driver Passenger Seats
- Soft Touch Hide-A-Bed Sofa w/ Footrests
- Day/Night Shades
- Slide Out Pantry (W/A)

- 32" TV (40" 328 & 335)
- Full Extension Drawers w/ Roller Bearing Slides
- Power Fan in Bathroom
- 1 Piece Fiberglass Shower
- Arctic Pack w/ Enclosed Tanks
- Door To Bedroom
- 32" Bedroom TV (Select Models)
- DVD Players In Bunk House (TV/DVD 351, 364)
- 30" Over-The-Range Microwave
- Decorative Kitchen Backsplash
- 5000# Hitch w/ Plug In
- Second Auxiliary Battery
- Automatic Hydraulic Leveling Jacks
- Color Side and Rear Cameras
- Remote/Heated Driver and Passenger Mirrors
- Black Tank Flush
- LED Map, Bunk and Accent Lights
- 15K BTU A/C with Heat Strip in Front
- 6 Gal. G/E DSI Water Heater (x2 364)
- 5.5 KW Onan Gas Generator
- Brandy Maple Cabinets

## POPULAR OPTIONS

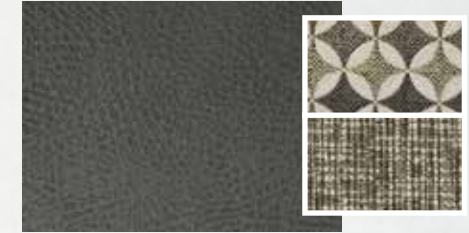
- 13.5K BTU Rear A/C w/Heat Strip
- Convection Microwave w/ Oven
- Power Drivers Seat
- Power Vent Fan
- Euro Recliner I.P.O. Barrel Chair (328 & 351 only)
- Full Body Exterior Paint
- **Stainless Steel Residential Package:** Stainless Residential Refrigerator with 2000 Watt Inverter and (4) House Batteries (dedicated), Stainless Steel Microwave and Oven (N/A 270)
- Home Theater System
- Washer/Dryer (328,364 Only)
- Dual Pane Windows
- Sofa I.P.O. J-Dinette (270 only)
- Manual Front Overhead Bunk
- Coach Day/Night Roller Shades
- Front Mount TV (N/A 270 or with Front Overhead Bunk)
- Exterior Entertainment Center (TV, AM/FM Stereo)
- Passenger Flip-up Workstation w/ Power Center
- Exterior Cargo Tray (N/A 364)

## EXTERIOR OPTIONS

- **Prestige Package**
  - Black
  - Champagne
- **Full Body Paint**
  - Blackberry
  - Firemist
  - Gun Metal
  - Onyx

## INTERIOR DÉCOR OPTIONS

### Mink



### Toffee



### Desert Wood



## FULL BODY PAINT OPTIONS



**BLACKBERRY**



**FIREMIST**



**GUN METAL**



**ONYX**



# DIMENSIONS & CAPACITIES

MODEL	270S	328TS	329TS	335DS	351DS	364TS
Chassis	Ford F53	Ford F53	Ford F53	Ford F53	Ford F53	Ford F53
Engine	V-10	V-10	V-10	V-10	V-10	V-10
Horsepower	320 HP	320 HP	320 HP	320 HP	320 HP	320 HP
Torque (ft-lbs)	460	460	460	460	460	460
Wheelbase	178"	208"	208"	208"	228"	242"
Fuel Capacity (gal.)	80	80	80	80	80	80
GCWR (lb.)	23,000	26,000	26,000	26,000	26,000	26,000
GVWR (lb.)	18,000	20,500	20,500	20,500	20,500	22,000
GAWR Front	8,000	8,000	8,000	8,000	8,000	8,000
GAWR Rear	12,000	13,500	13,500	13,500	13,500	15,000
Interior Height	80"	80"	80"	80"	80"	80"
Interior Width	95 1/2"	95 1/2"	95 1/2"	95 1/2"	95 1/2"	95 1/2"
Overall Height w/AC	12' 1"	12' 1"	12' 1"	12' 1"	12' 1"	12' 1"
Overall Length	28' 10"	34' 4"	34' 11"	34' 11"	35' 9"	37' 6"
Overall Width	101"	101"	101"	101"	101"	101"
Exterior Storage (cu. ft.)	88	130	120	100	157	129
Fresh Water (gal.)	50	50	50	50	50	50
Black Water (gal.)	42	42	42	42	42	84
Grey Water (gal.)	42	42	42	42	42	84
LP Tank (gal.)	24	29	24	24	24	24
Water Heater (gal.)	6	6	6	6	6	6 (2)
Furnace (b.t.u.)	35K	20K & 20K	35K	35K	35K	30K & 20K
Patio Awning	15'	17'	18'	18'	14'	12'

**GVWR (Gross Vehicle Weight Rating)** is the maximum permissible weight of the unit when fully loaded. It includes all weights, inclusive of all fluids, occupants, cargo, optional equipment and accessories. For safety and product performance do NOT exceed the GVWR.

**GCWR (Gross Combined Weight Rating)** is the maximum permissible loaded weight of your motor home and any towed trailer or towed vehicle. Actual GCWR of this vehicle may be limited by the sum of the GVWR and the installed hitch receiver maximum capacity rating; see hitch rating label for detail.

**GAWR (Gross Axle Weight Rating)** is the maximum permissible weight, including cargo, fluids, optional equipment and accessories that can be safely supported by each axle.

**UVW (Unloaded Vehicle Weight) \*** is the typical weight of the unit as manufactured at the factory. It includes all weight at the unit's axle(s), including full fuel, all fluids and LP Gas. The UVW does not include cargo, fresh potable water, additional optional equipment or dealer installed accessories.

\*Estimated Average based on standard build optional equipment.

**CCC (Cargo Carrying Capacity) \*\*** is the amount of weight available for fresh potable water, cargo, passengers, additional optional equipment and accessories. CCC is equal to GVWR minus UVW. Available CCC should accommodate fresh potable water (8.3 lbs per gallon). Before filling the fresh water tank, empty the black and gray tanks to provide for more cargo capacity.

\*\* Estimated average based on standard build optional equipment

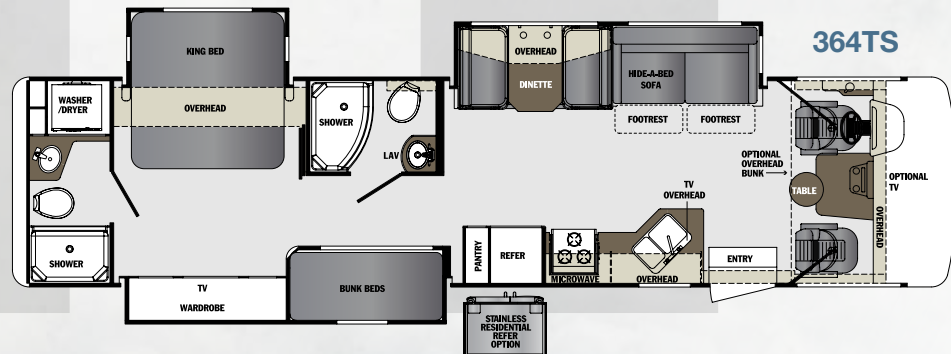
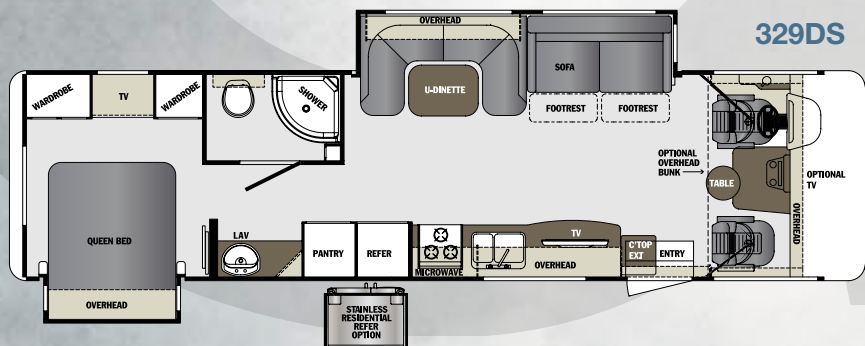
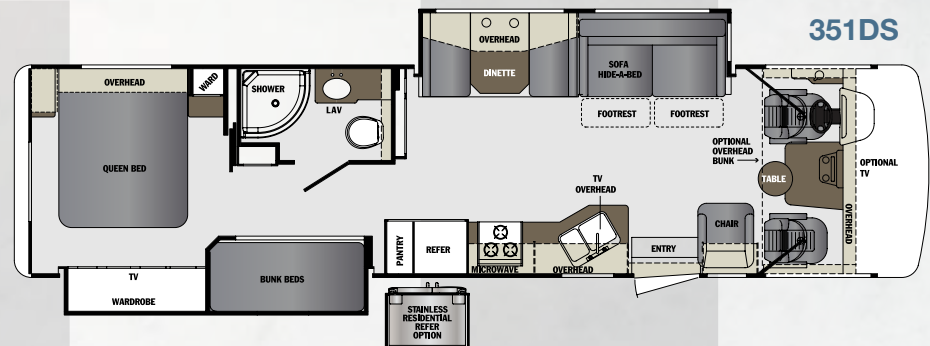
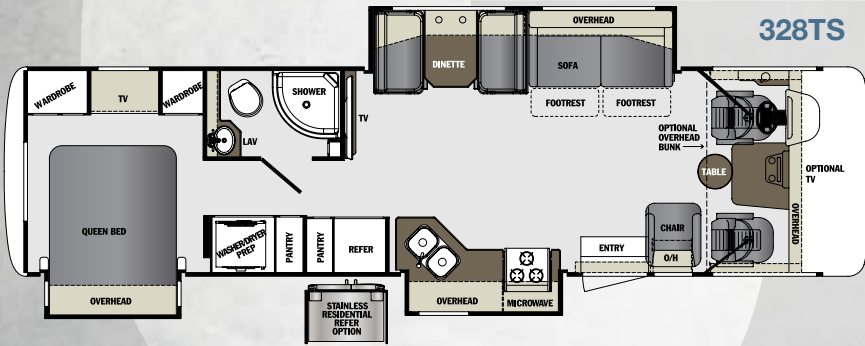
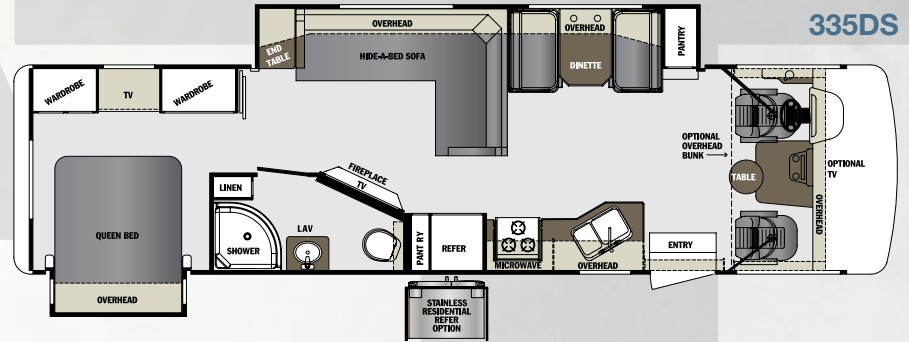
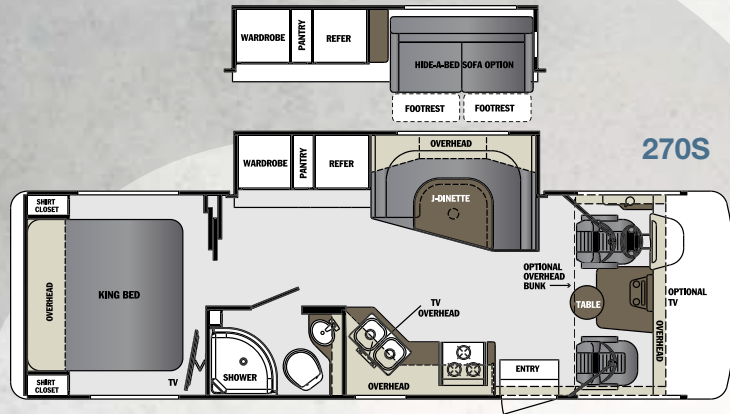
Each Forest River RV is weighed at the manufacturing facility prior to shipping. A label identifying the unloaded vehicle weight of the actual unit and the cargo carrying capacity is applied to every Forest River RV prior to leaving our facilities.

The load capacity of your unit is designated by weight, not by volume, so you cannot necessarily use all available space when loading your unit.

Actual towing capacity is dependent upon your particular loading and towing circumstances, which includes the GVWR, GAWR and GCWR as well as adequate trailer brakes. Please refer to the Operator's Manual of your vehicle for further towing information.



# FLOORPLANS







**24/7 EMERGENCY ROADSIDE ASSISTANCE**

**Coach-Net<sup>®</sup>**  
RV Technical & Roadside Assistance

For a worry-free ownership experience Forest River includes one year of Coach-Net RV Technical & Roadside Assistance with each RV purchase. Whether new to the RV lifestyle or an experienced RV enthusiast, Forest River owners have 24/7 access to technical, operational and emergency road service coverage throughout the US & Canada. Coach-Net's fast, dependable service is just a phone call away.

YOUR GEORGETOWN DEALER



**PRE-DELIVERY INSPECTION FACILITY**

20,000 square feet of quality assurance. The bare essentials for a premium product. This state-of-the-art facility gives immediate daily feedback to production for quality assurance in every unit built.



**Forest River, Inc. encourages our customers to purchase their Forest River products from a local dealership whenever possible for the following reasons:**

- 1) Forest River, Inc. dealers are independently owned and operated businesses so priority service and scheduling is at their discretion and is often provided to customers that purchased their unit at that dealership.
- 2) Purchasing locally allows customers to establish meaningful relationships with a dealer, enhancing the RV experience through assistance with product questions, user tips or RV regulations for your state or country, and much more!
- 3) Canadian customers must meet requirements to bring an RV purchased out of the country to their home. These requirements may involve additional inspections and certifications, taxes and fees. Your local Canadian Dealer is a professional at meeting these requirements.
- 4) Scheduling timely warranty repairs and adjustments through a local dealership provides far greater flexibility and convenience to you, the customer!

It is the goal of Forest River, Inc. that all of our RV owners fully enjoy the RV experience and that customer satisfaction meets or exceeds their expectations!



**Learn More**  
Scan this barcode using a QR Reader on your smart phone to learn more about Forest River.



A Berkshire Hathaway company.



A Berkshire Hathaway company.

Forest River, Inc.  
58277 State Rd. 19 South  
Elkhart, IN 46517  
Phone: 574.296.7700  
Fax 574.295.8749

[www.forestriverinc.com](http://www.forestriverinc.com)

**FREE MEMBERSHIP**  
to Forest River Owners' Group

[www.forestriverfrog.com](http://www.forestriverfrog.com)



All information contained in this brochure is believed to be accurate at the time of publication. However, during the model year, it may be necessary to make revisions and Forest River, Inc., reserves the right to make all such changes without notice, including prices, colors, materials, equipment and specifications as well as the addition of new models and the discontinuance of models shown in this brochure. Therefore, please consult with your Forest River, Inc., dealer and confirm the existence of any materials, design or specifications that are material to your purchase decision. 08/16 10K

©Copyright 2016 Forest River Inc - All Rights Reserved.